



2050 Long-Range Transportation Plan

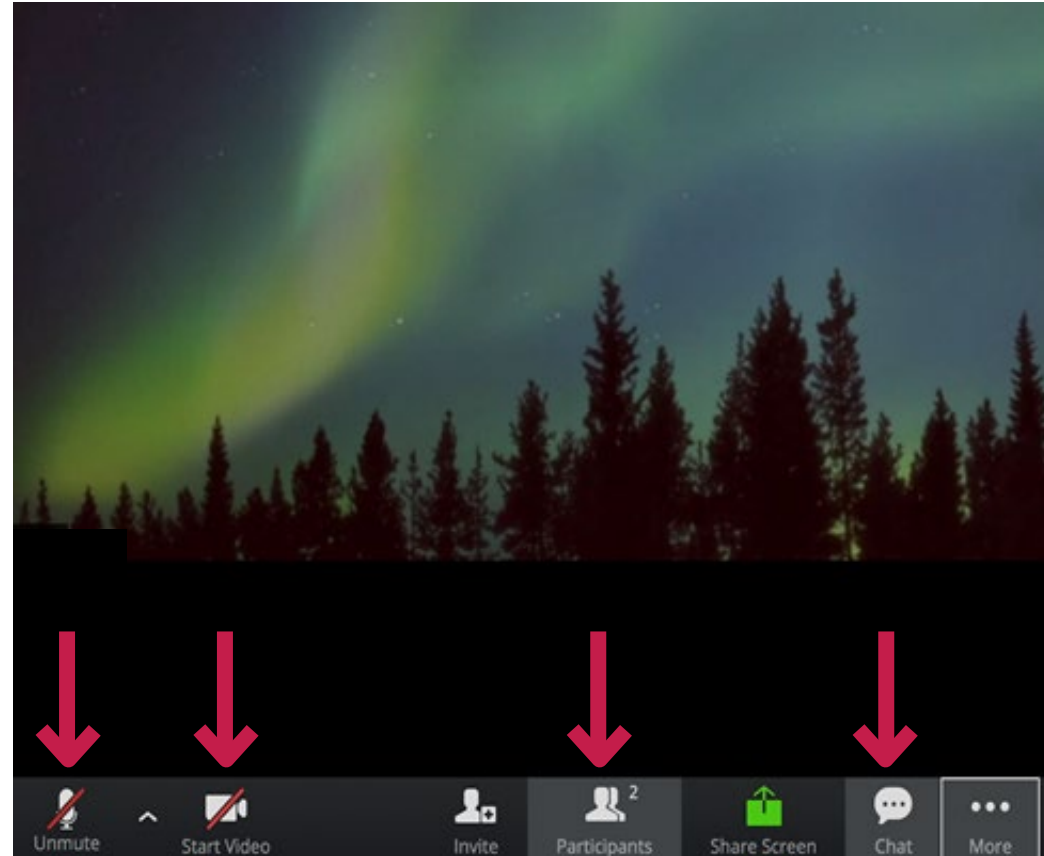
L RTP Citizens Advisory Committee
June 18, 2020



Welcome & Introductions

Update and simplify

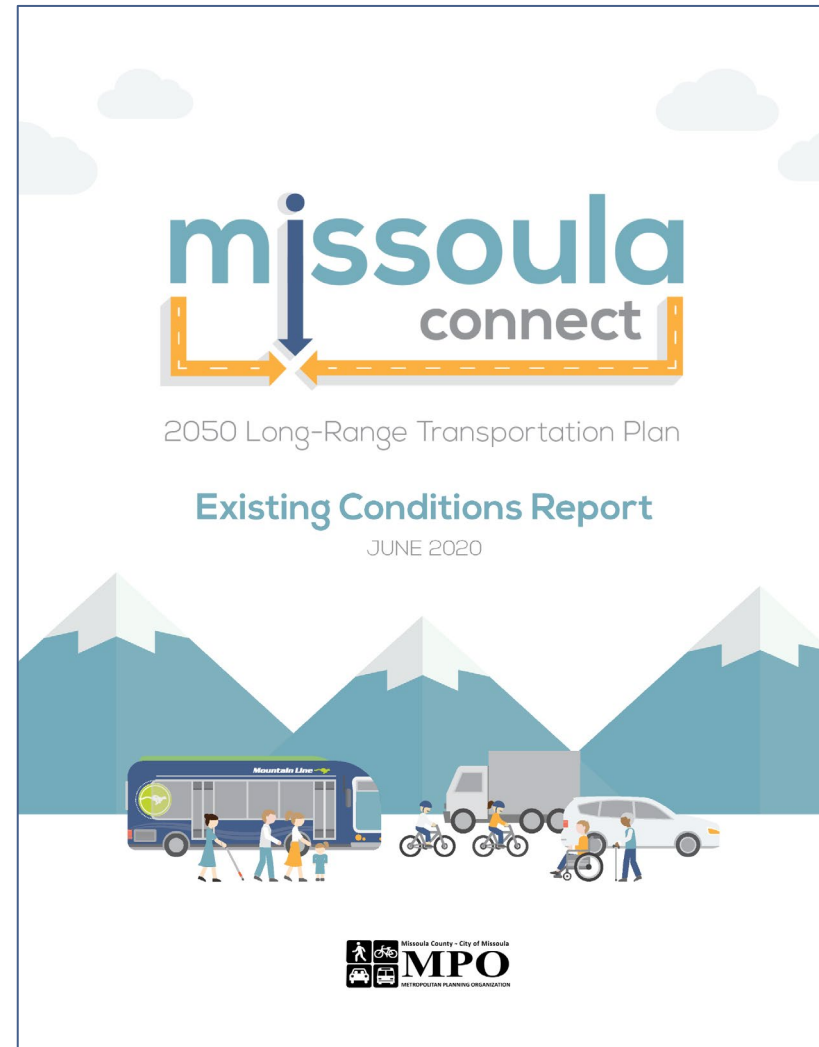
- Review meeting goals
- Review Zoom features
- Conduct roll call introductions
- Jump to breakout rooms to say hi and share what you hope to get out of today's meeting



Recent Work

A busy May and June

- Participated in 15+ updates and briefings
- Completed existing conditions report
- Developed preliminary goals and desired outcomes
- Launched call for projects
- Created first two videos in a new series
- Prepared draft evaluation framework




Developing Goals

Build on what works



Federal Goals and Planning Factors



Other Missoula Plans



ACTIVATE
MISSOULA 2045
2016 LRTP



Mobility Values

Preliminary Goals & Outcomes

Update and simplify



- Improve safety and promote health to enhance quality of life



- Advance sustainability and climate resilience to protect natural and historic resources



- Expand mobility choices to improve efficiency and accessibility



- Connect and strengthen communities to create a more equitable region



- Maintain assets and invest strategically to boost economic vitality

CAC Discussion

Preliminary goals and outcomes

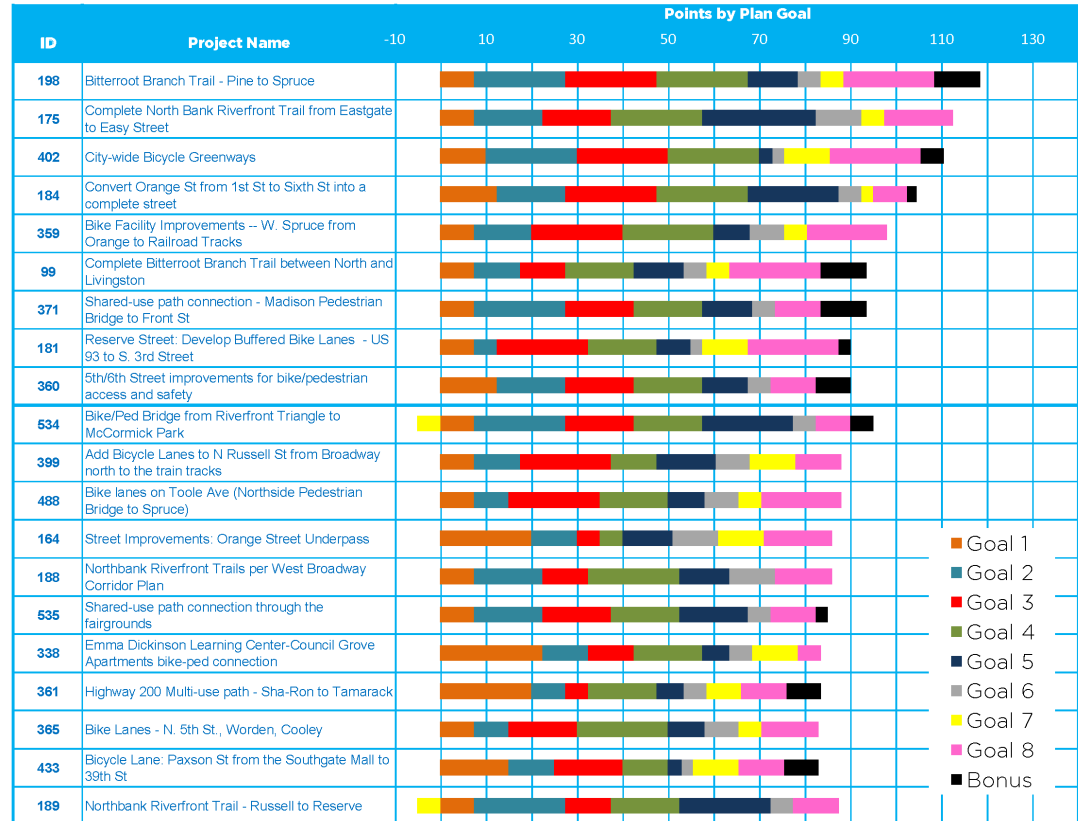
- Did we get these goals and outcomes right?
- Do they reflect what matters most to Missoula?
- What's missing? Is there another goal or outcome that should be part of our focus?
- Which of the goals are most important to you?
- And which outcomes should we prioritize?



CAC Discussion

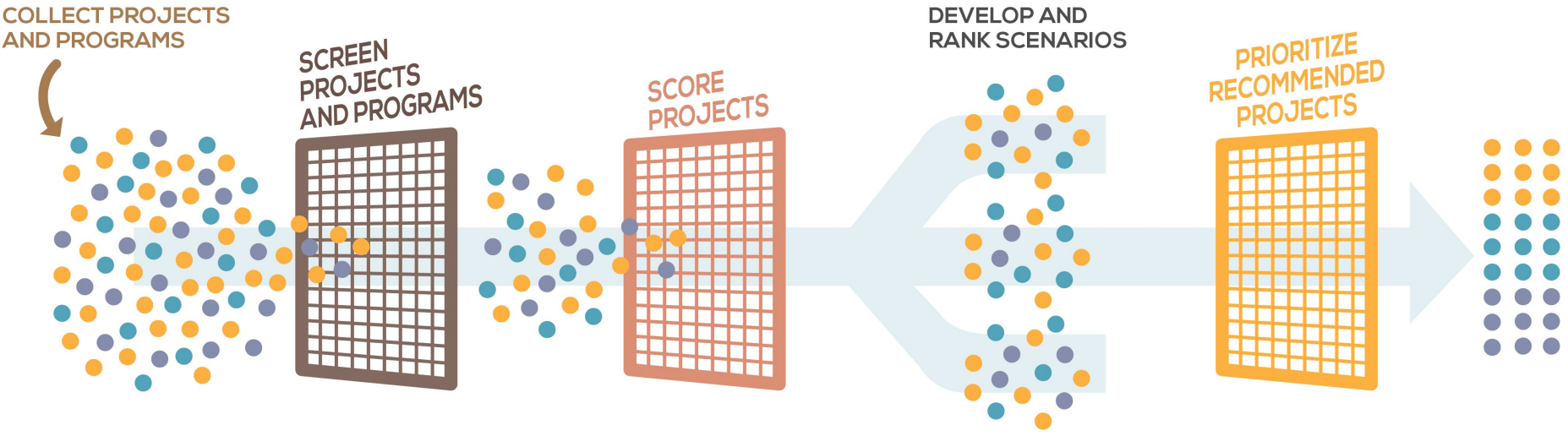
Evaluation and prioritization approach

- If you are familiar with it, how did you feel about the process used for the 2016 long-range plan?
- What were some of the strengths? And weaknesses?



Refining the Approach

Streamline and clarify



Step 1: Collect Projects & Programs

Open public invitation



INSTRUCTIONS

- 1 Zoom to your area of interest
- 2 Click **DRAW A LINE** or **DRAW A POINT** and choose a category
- 3 Draw as many items as you'd like and add a description to each
- 4 Click on other submitted ideas to add comments

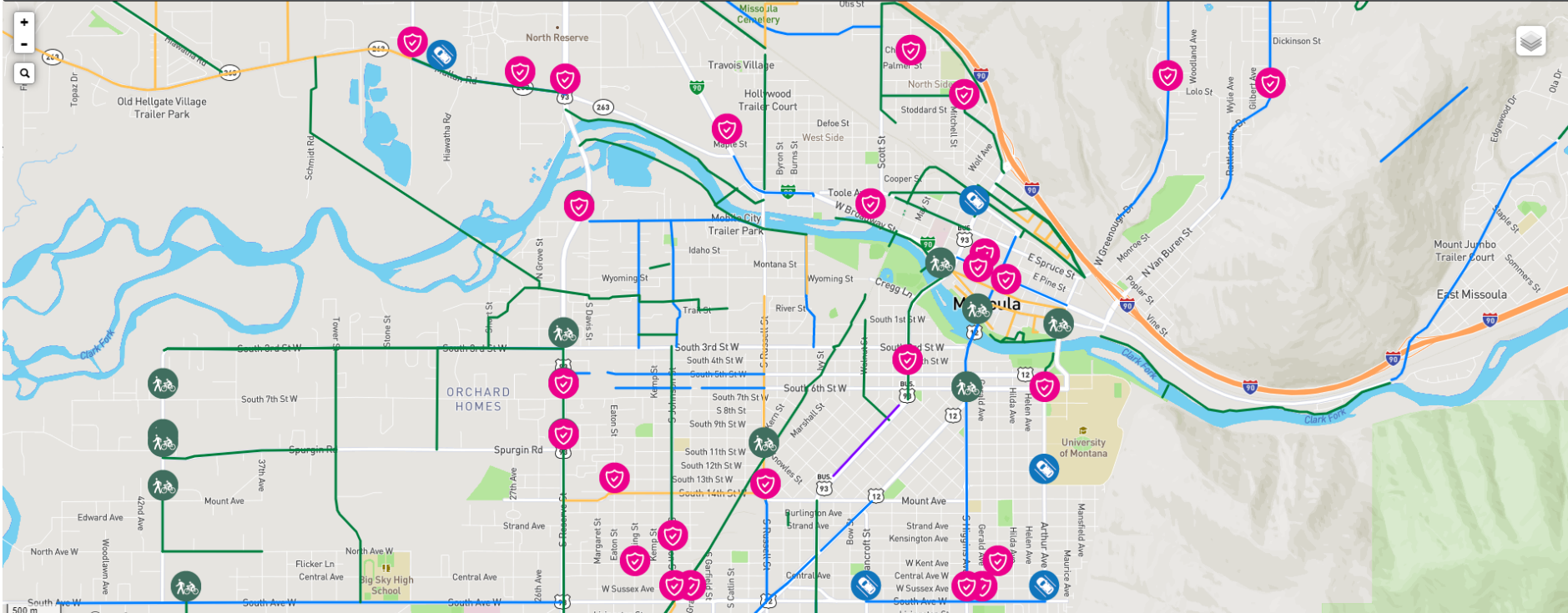
POINT CATEGORIES

- Walking & Biking
- Safety
- Transportation Options
- Maintenance
- Complete Streets
- Transit Stop, Corridor, or Service

LINE CATEGORIES

- Walking & Biking
- Safety
- Transportation Options
- Maintenance
- Complete Streets
- Transit Stop, Corridor, or Service

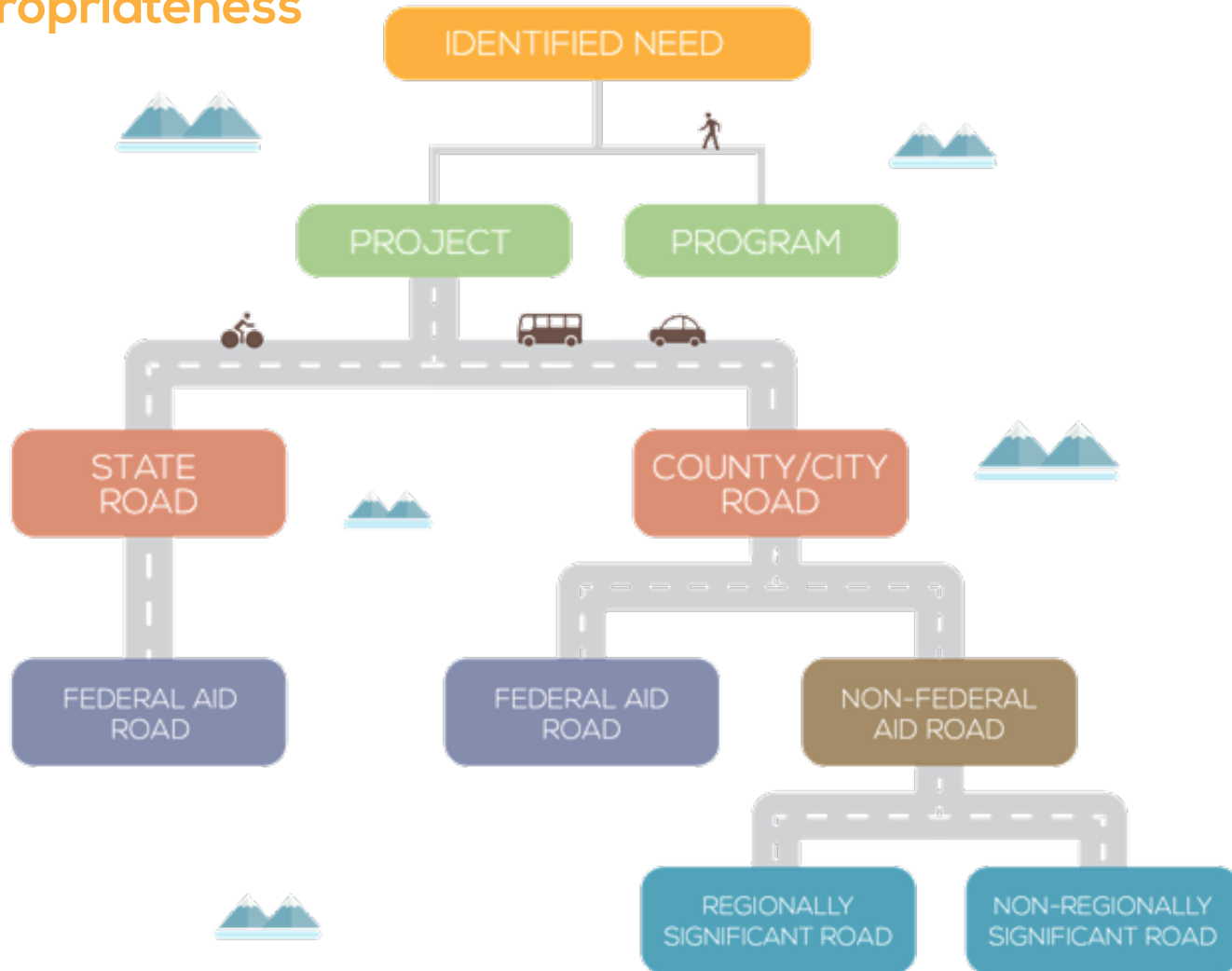
Missoula L RTP Update Call for Projects About & Help DRAW A LINE DRAW A POINT [Share 0](#) Guest



2050 Long-Range Transportation Plan

Step 2: Screen Projects & Programs

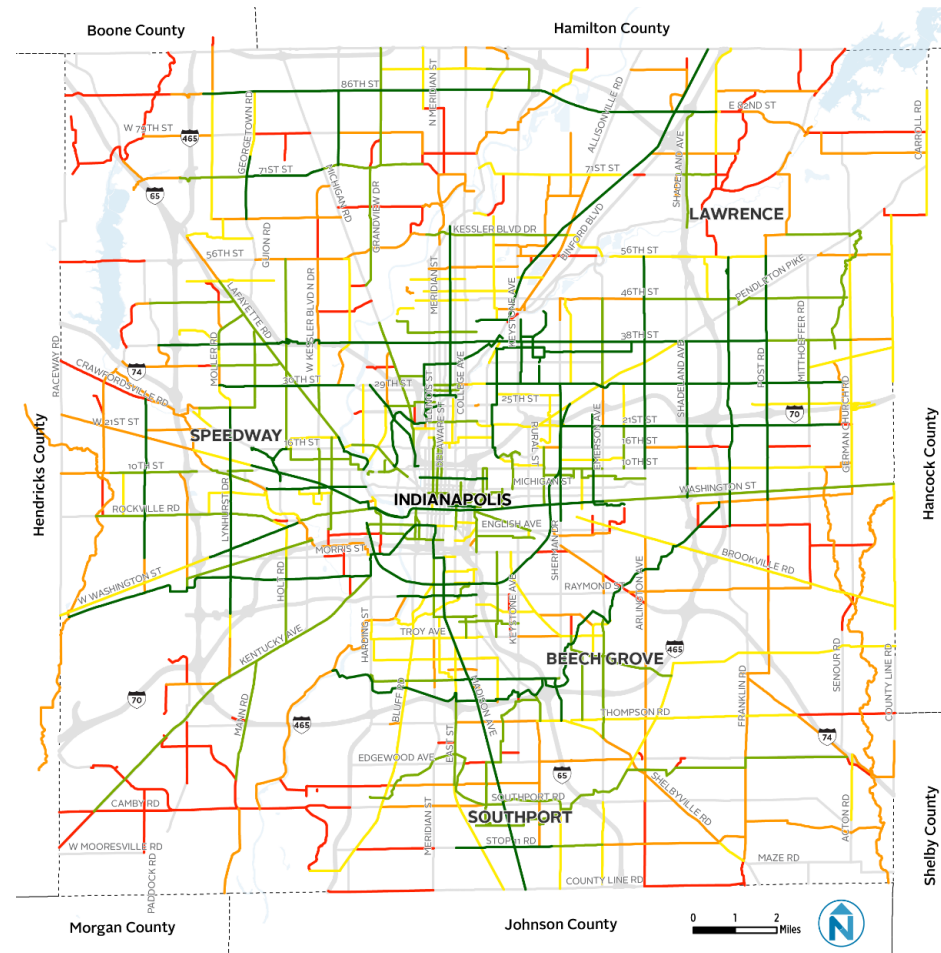
L RTP appropriateness



Step 3: Score Projects

Quantitative and GIS-based tiering

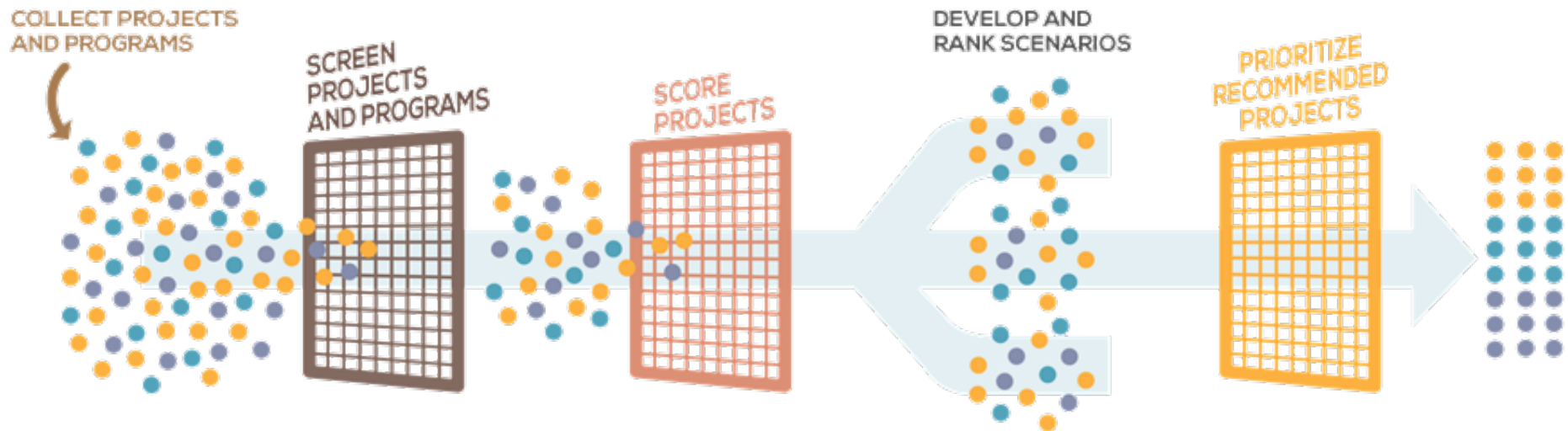
- Provide ability to score many projects quickly
- Establish geographic criteria tied to desired outcomes
- Focus on yes/no rather than gradations of points
- Get to tiers rather than Project #1, Project #2, and beyond
- Save descriptive and qualitative measures for prioritization



TAC Discussion

Initial thoughts and feedback

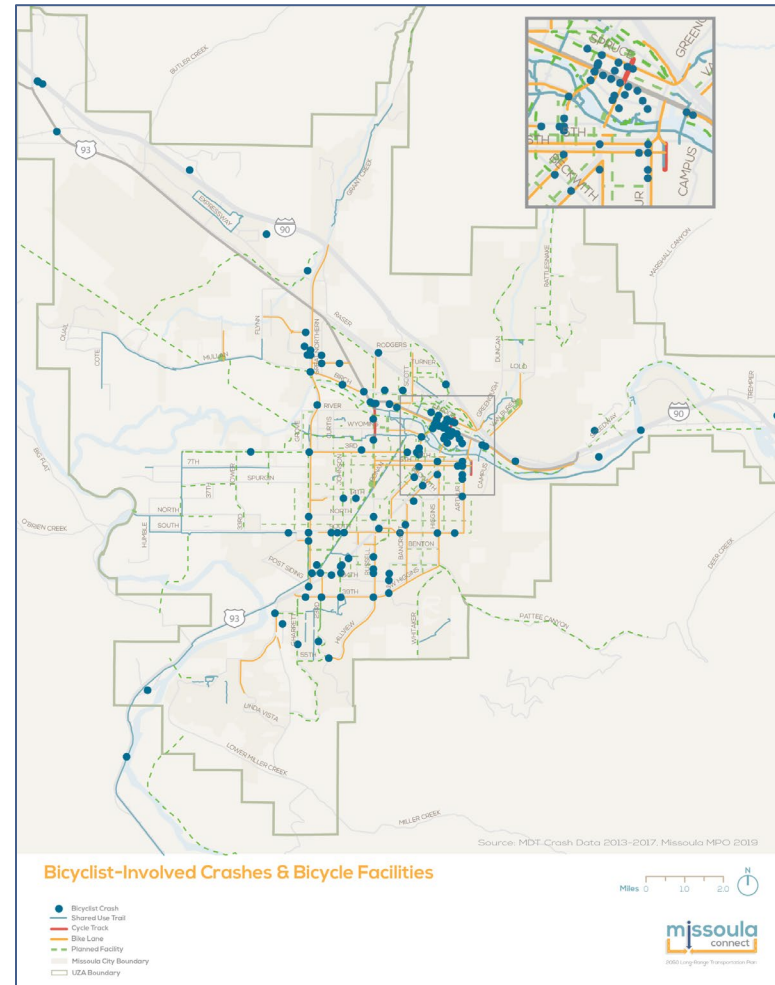
- Does this approach make sense?
- In Step 3, what criteria are missing or need revision?
- Do you have data to support any new criteria?



Project Identification

Areas of focus

- Identify key areas of focus for new projects, programs, or investments
- Review public Call for Projects tools and resources
- Brainstorm approaches to engaging community members in responding to the call



Funding Tradeoffs

Relative priorities for investment

Go to www.menti.com and use the code 87 45 99

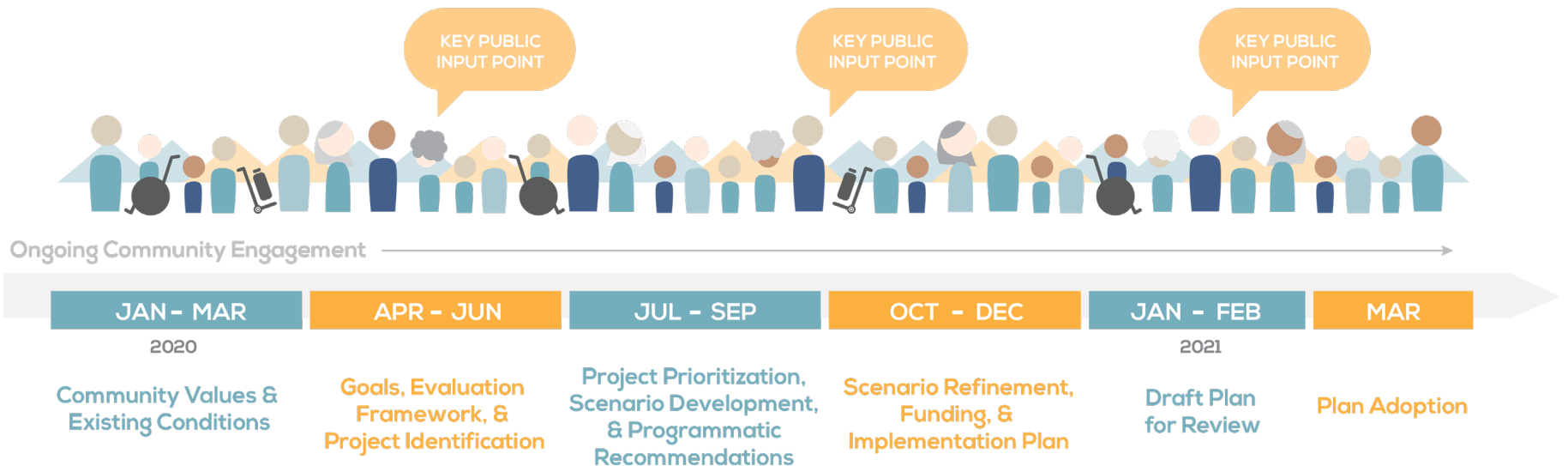
How would you prioritize the following bicycle network improvements?

- 1st New on-street bicycle lanes/routes
- 2nd New commuter paths (or off-street trails)
- 3rd Enhance existing on-street bicycle facilities (e.g., convert sharrows to bike lanes, bike lanes to protected facilities)
- 4th More secure bicycle parking

Next Steps

Priorities for June

- Host project identification workshop with Specialized Transportation Advisory Committee
- Finalize draft goals and performance measures
- Refine evaluation and prioritization framework



Thank you!

Aaron Wilson, MPO
wilsona@ci.missoula.mt.us

Jennifer Wieland
jwieland@nelsonnygaard.com

missoulampo.com/long-range-transportation-plan